

Welcome!

Lumni • 4

What's on today?

Boost your culture and your creativity! Discover a famous character of British literature through...



A painting



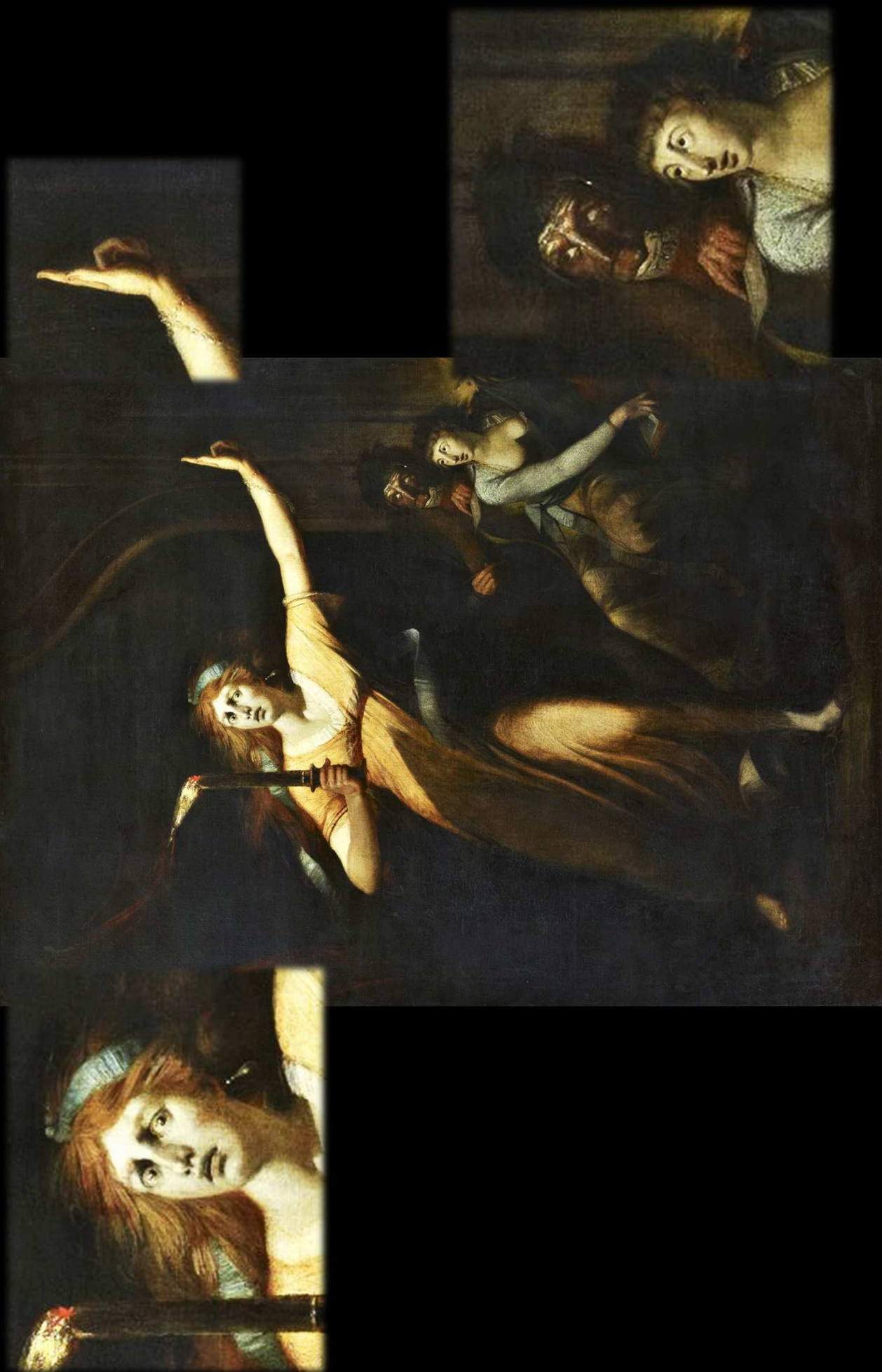
A graphic novel

*With words
from our
students!*



© RMN-Grand Palais (musée du Louvre) / Thierry Ollivier





She's scared.

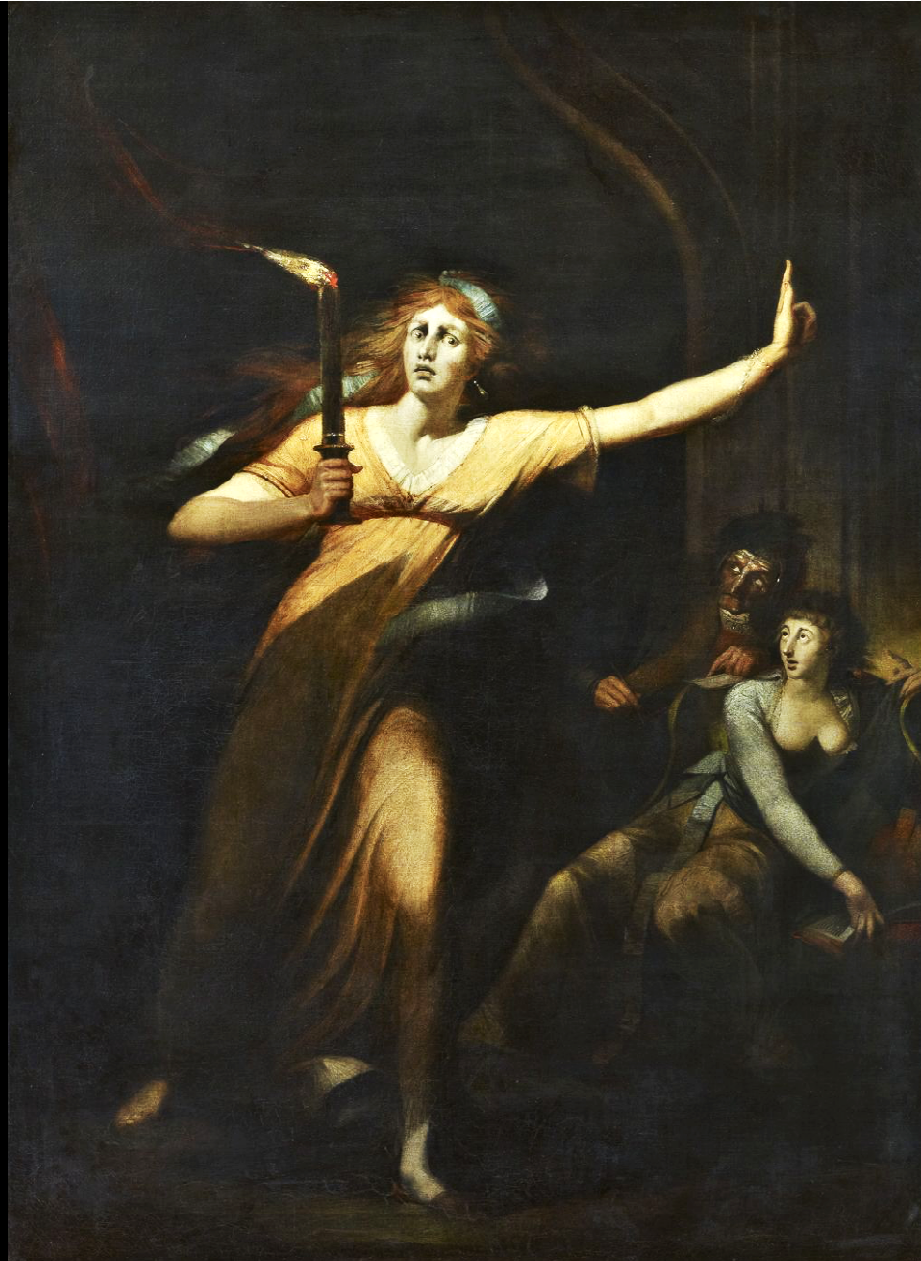
Jennyfer

She looks mad.

Lambertine

If we look at the facial expression of the woman who holds the torch, she seems stressed.

Clément



The woman's eyes are open as if she had just seen a ghost and her hand is telling them to be quiet.

Vlora

Maybe the principal woman is fleeing something.

Romain

The other characters are listening
and they seem frightened.

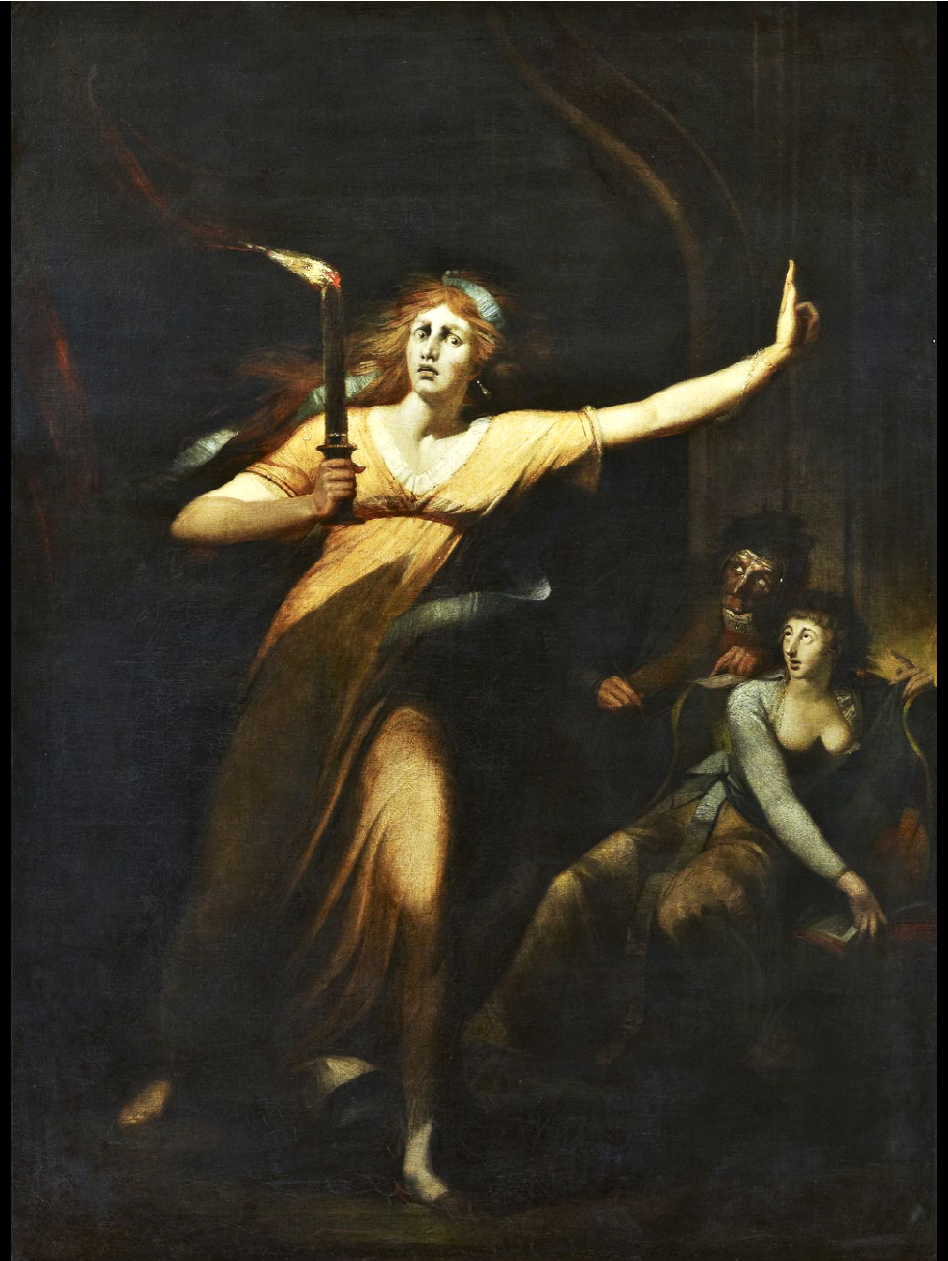
Jessica

They seem to be confused.

Oriane

It feels like they are hiding from a
dangerous, scary thing.

Vlora



She's maybe a witch because, in the past, red hair was associated with witches.

Eva

It's really dark, there is an atmosphere of fear that is present in this painting.

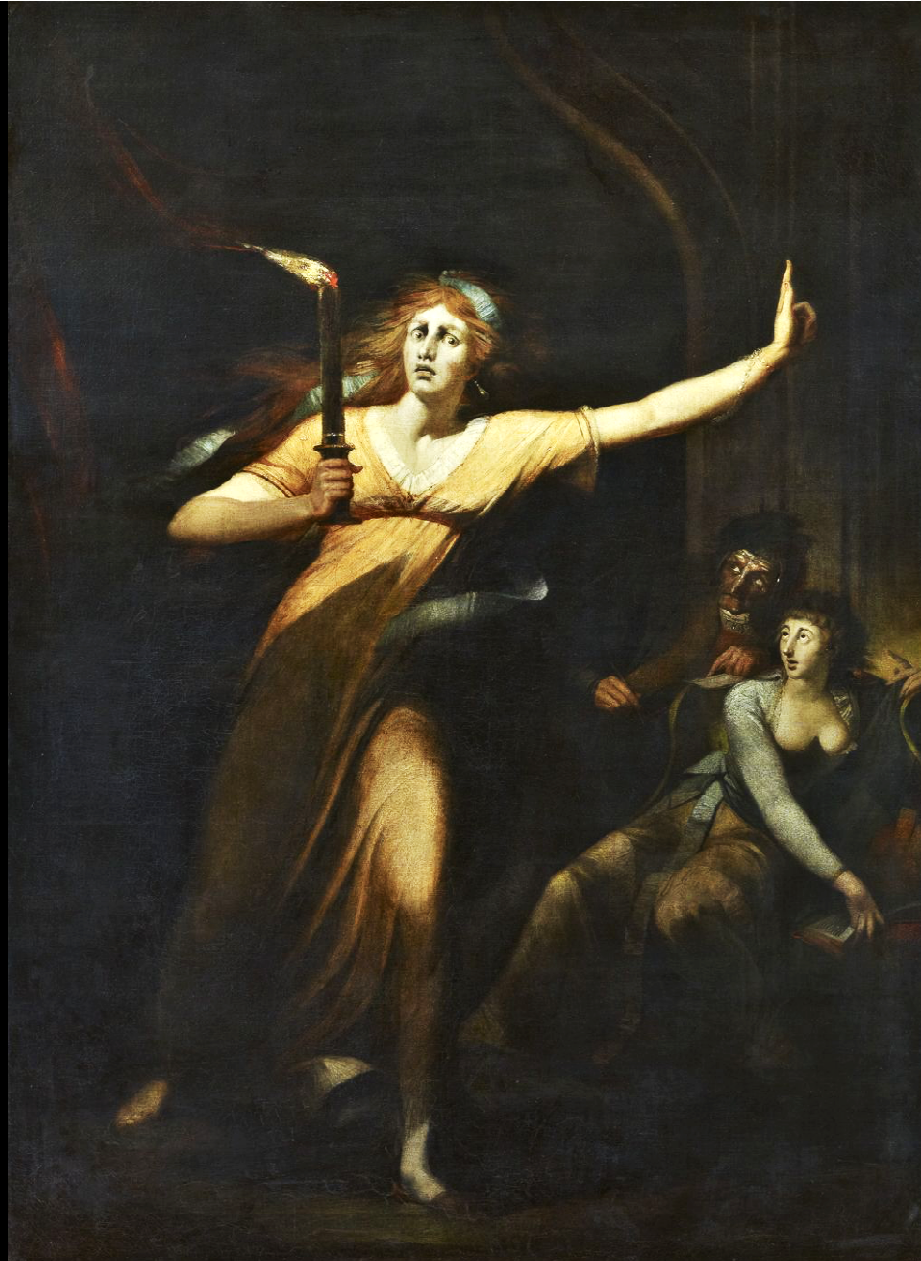
Matheo

There is a contrast between light and dark, a chiaroscuro.

Victoire



*The Sleepwalking
Lady Macbeth,*
Henry Fuseli
Circa 1784



© RMN-Grand Palais (musée
du Louvre) / Thierry Ollivier

Shakespeare!

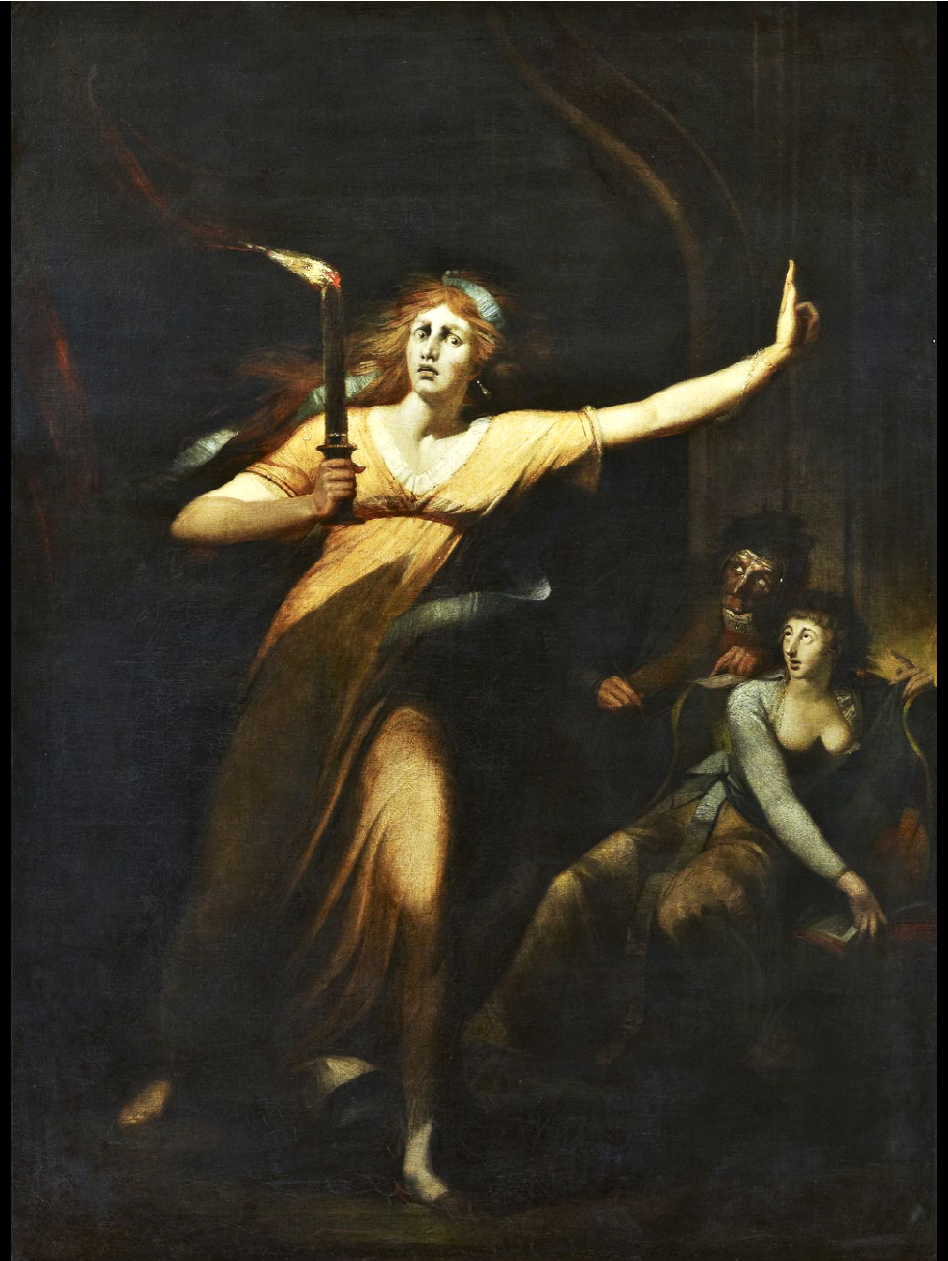
Lambertine

So the lady is Lady Macbeth and she
is sleepwalking.

Estelle

She's the wife of a powerful man.

Mathéo



*The Sleepwalking
Lady Macbeth,*
Henry Fuseli
Circa 1784



The painter was
inspired by this
play...

Oriane

...Two centuries
later!

Lambertine

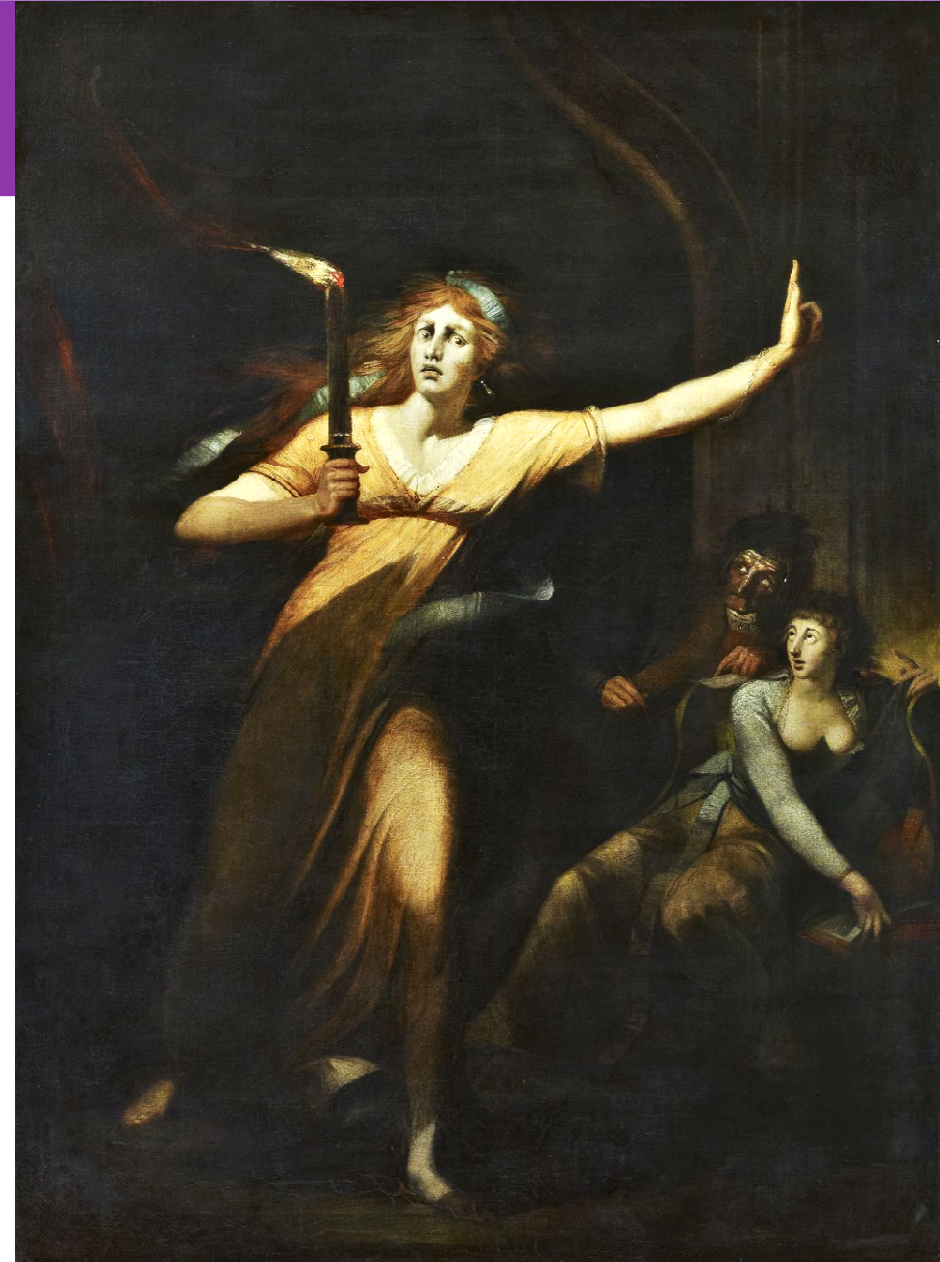
© RMN-Grand Palais (musée
du Louvre) / Thierry Ollivier

Let's recap!

What questions do we have?



Alexis & Ninon



It's an adaptation,
a really modern
take.

Laïsa & Ilona

It's a
reinterpretation of
the original book.

Chloé



The Tragedy of Macbeth

William Shakespeare,
circa 1606

© SelfMadeHero. Text adaptation
by Richard Appignanesi;
illustrated by Rob Deas

Macbeth and Lady Macbeth

"But screw your courage to the sticking-place and we'll not fail!"

"I dare do all that may become a man."

Three witches confirm Macbeth's ambition

"All hail, Macbeth, that shalt be king hereafter!"



Three witches confirm Macbeth's ambition.



"All hail, Macbeth,
that shalt be king hereafter!"



Three witches confirm Macbeth's ambition.

They predict
Macbeth's reign.

Laïsa

They're frowning, they seem really angry.
Laïsa

His wife is more determined than him. I
thought at first that it was her who was
holding the sword.

Clément



Ninon & Victoire

They both need each other to make it.
Vlora





"But screw your courage to the sticking-place and we'll not fail!"



*"I dare do all that
may become a man."*

*"I dare do all that
may become a man."*







Ninon







Doctor

You see, her eyes are open.

Gentlewoman

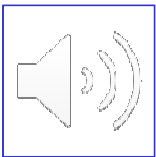
Ay, but their sense is shut.

Doctor

What is it she does now? Look, how she rubs her hands.

Macbeth, V, 1, William Shakespeare, circa 1606





*Victoire
& Ninon ☺*





© SelfMadeHero. Text adaptation
by Richard Appignanesi;
illustrated by Rob Deas





*A dialogue between the
doctor and the maid, by
Ninon*

[Lady Macbeth arrives, all sweating, illuminating all the room with her torch.]

Lady Macbeth (*yelling and raising her arms*): Oh my god, please forgive me! Forgive me!

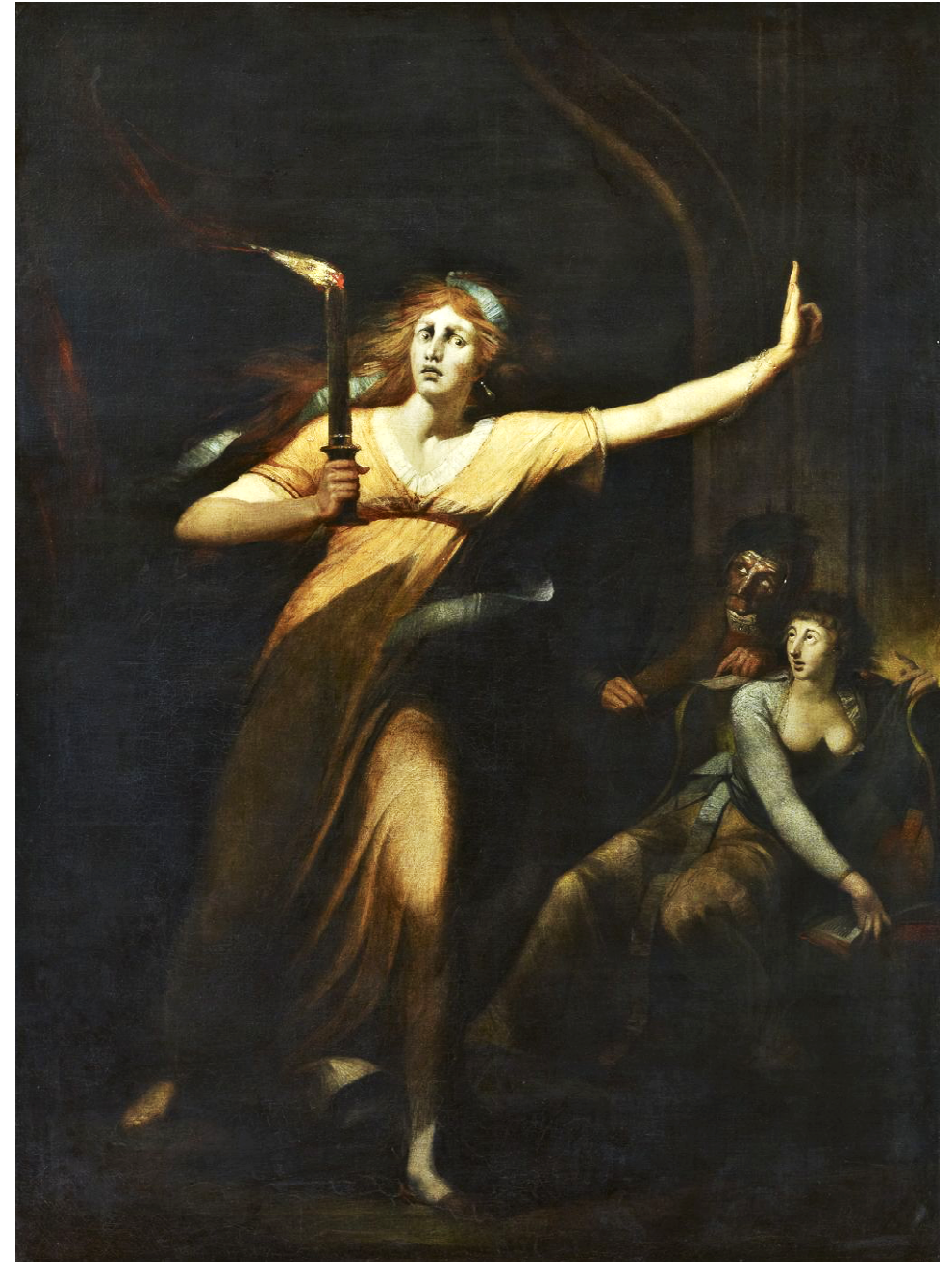
Maid (*whispering*): Damn! It's Lady Macbeth! She looks horrified. Are there ghosts in the house?

[Lady Macbeth whispers nonsense with bulging eyes, she doesn't seem to have heard the man.]

Doctor: She can't hear you ! Don't you see her? She looks bewitched!

Maid: I think it's not the first time that she has been caught up in madness.

Lady Macbeth (*closing her eyes*): My hands, my hands!



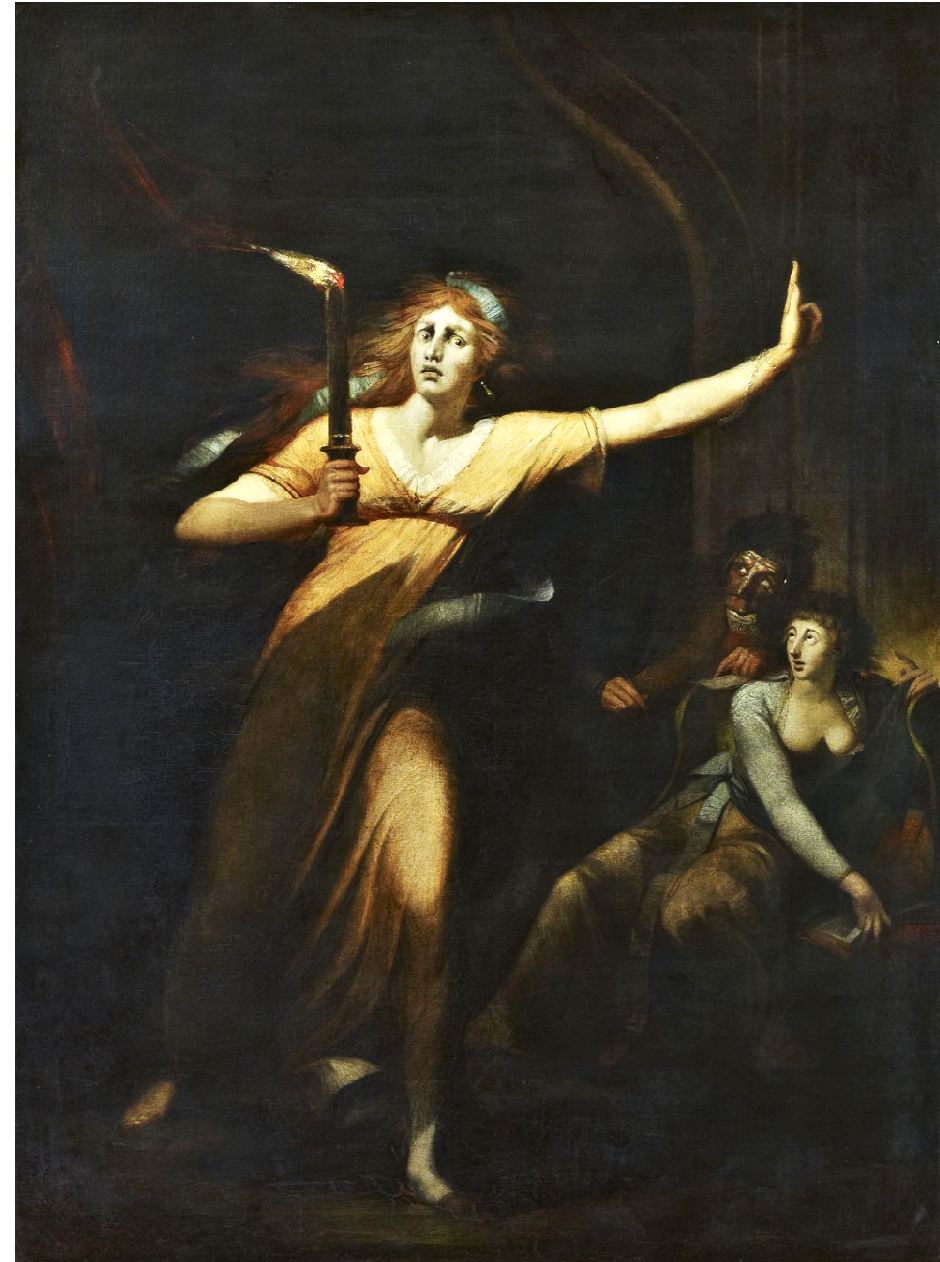
Maid: Why is she rubbing her hands like that?
(*To Lady Macbeth*) Do you want some soap,
Madam? I don't think that fire is the best way to
wash your sins away.

*[Lady Macbeth, still rubbing her hands, says that
she sees blood everywhere.]*

Doctor: Oh my god! Something horrible happened.
Do you think the rumours about her are true? I
mean, did she really kill someone?

Maid: Oh yes, I believe it! She's the devil. Look at
her! She's sleepwalking and confessing her wrongs.

Livia





Victoire

She has gone crazy ... But I have to protect her, otherwise she might get exposed, and that would completely ruin her life ...

Victoire



However, what she has done was and is deeply wrong. Shall I tell this doctor everything? After all, she did push Mcbeth to commit that murder. Such actions are inexcusable, even for a Queen!

Now, feel free to use our recap cards!

You will be able to download this slideshow on the France4 website

Useful questions when studying a painting 😊

What do I feel when looking at this painting?

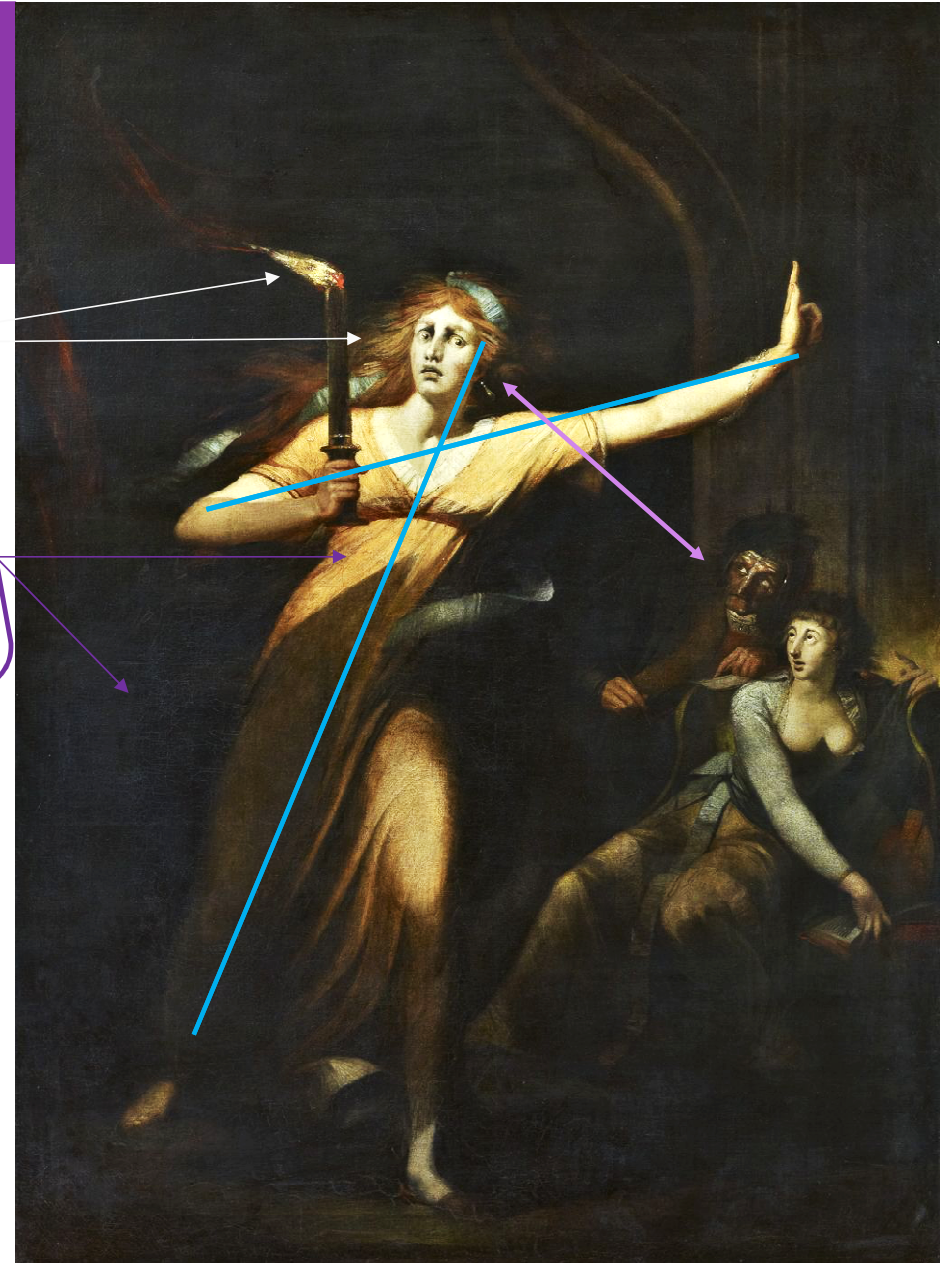
What may explain these feelings?

The colours

The contrast between light & dark (chiaroscuro)

The composition & the movements

The dynamics of the painting



Useful words to comment on a work of art 😊

To describe & make hypotheses

- It looks like he/she is...
- The character looks / seems...
- The character is represented / portrayed as...
- She may / might be...
- At first... But then...

To mention the artwork

- A painting
- A graphic novel
- A play – written by a playwright
- An adaptation / a reinterpretation / a new take

To explain the intention of the artist

- The painter may have wanted to show...
- The illustrator must have intended to represent... as...

*Links with the **LLCER** curriculums*

Première

➤ **Rencontres**

L'amour et l'amitié

➤ **Imaginaires**

Imaginaires effrayants

Terminale

➤ **Art et débat d'idées**

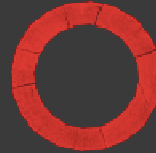
L'art qui fait débat

➤ **Expression et construction de soi**

L'expression des émotions

Before you go...

[← BACK TO MAIN SITE](#)



PLAYING SHAKESPEARE

 MENU

MACBETH

A production created especially for young people.

In partnership with
BORN TO BE
The Deutsche Bank youth
engagement programme



PLAYING
SHAKESPEARE
WITH DEUTSCHE BANK



[Jump to](#)

[Watch](#) 

[Learning resources](#) 

***Thanks for your
attention!***

***Stay connected with English, stay home &
stay safe!***